

# MONTHLY MEMBERSHIP PROGRESS REPORT

District 19 E

Results as of: 5/31/2020

GMT:

LOCATION WASHINGTON

GMT CA

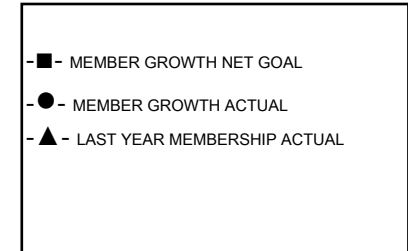
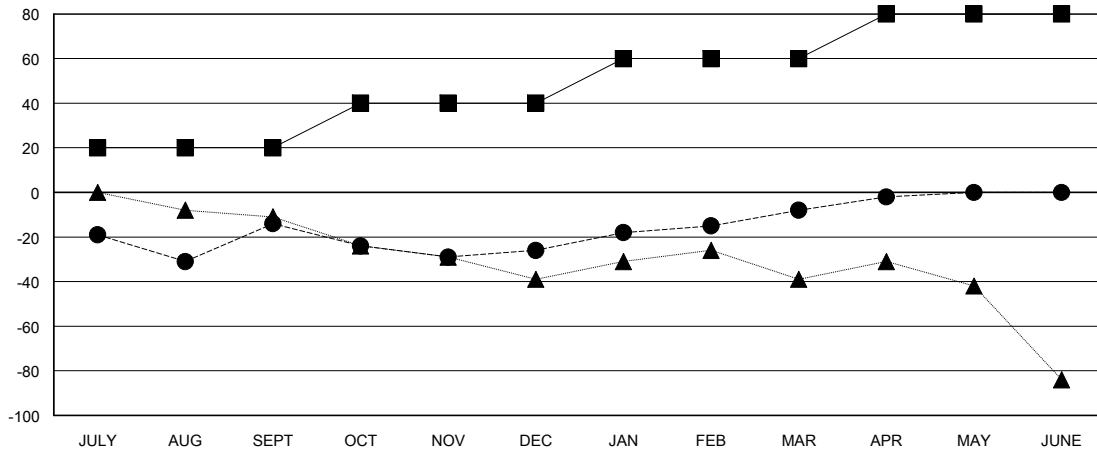
Clubs			
RESULTS FOR 2019-2020			
QUARTER	NEW CLUB GOAL	NEW CLUBS	DROPPED CLUBS
JULY/AUG/SEPT	0	0	0
OCT/NOV/DEC	1	0	1
JAN/FEB/MAR	0	0	0
APR/MAY/JUNE	0	0	0

Members			
RESULTS FOR 2019-2020			
QUARTER	MEMBER GROWTH NET GOAL	MEMBER GROWTH ACTUAL	DROPPED MEMBERS ACTUAL (including transfers)
JULY/AUG/SEPT	20	36	44
OCT/NOV/DEC	20	44	51
JAN/FEB/MAR	20	47	27
APR/MAY/JUNE	20	10	4

GOALS AND ACTUAL NEW CLUBS CUMULATIVE



GOALS AND ACTUAL MEMBERS CUMULATIVE



DROPPED CLUBS: 1	34 CLUBS OF 48 ADDED 1 OR MORE NEW MEMBERS	<b>GENDER DISTRIBUTION</b> MALE 819 (63.74%) FEMALE 466 (36.26%)
<b>DROPPED MEMBERS</b> DECEASED 18 CLUB CANCELLED 9 OTHER 99 TOTAL 126	<a href="#">CLICK HERE FOR CUMULATIVE MEMBERSHIP DATA</a>	TOTAL FAMILY UNIT MEMBERS 375 FAMILY MEMBERS PAYING HALF DUES 190